



Eco-friendly
Wood Plastic Composite

『 **YES WOOD™** 』

YES WPC Co., Ltd



With stable quality, reasonable price, various kinds, we are proud of the best provider in the eco-friendly WPC sector.

The characteristics of YES WOOD™

- Harmless to human without preservative, chemical treatment
- Enhancement of waterproof, wet proof and insect resistance without additional preservative treatment; well endure moisture
- Without damage by microbe, decoloration, discoloration, decay
- Excellent constructability by the fixed sizes without knot
- Effect to save wood resources and handling cost of wood waste
- Recycling is possible
- Simple maintenance (washing)

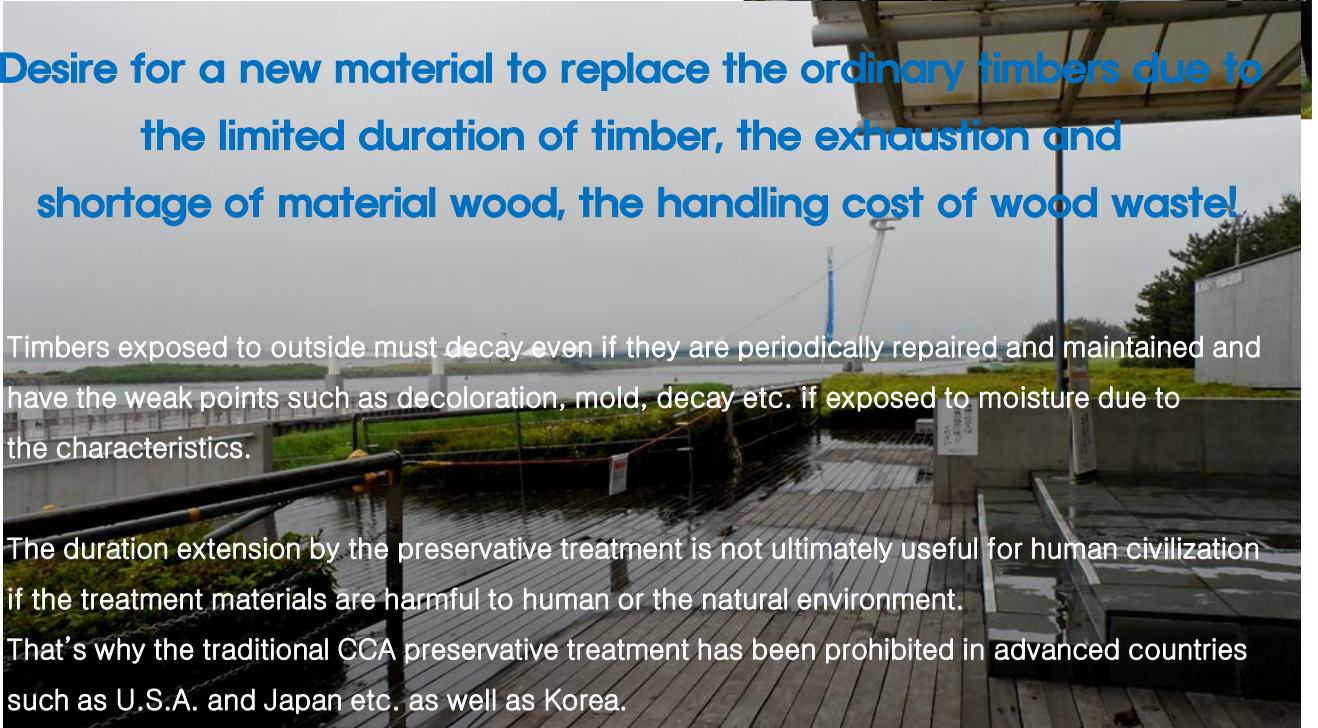


Desire for a new material to replace the ordinary timbers due to the limited duration of timber, the exhaustion and shortage of material wood, the handling cost of wood waste!

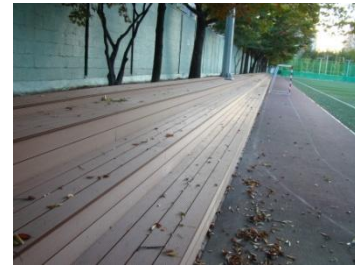
Timbers exposed to outside must decay even if they are periodically repaired and maintained and have the weak points such as decoloration, mold, decay etc. if exposed to moisture due to the characteristics.

The duration extension by the preservative treatment is not ultimately useful for human civilization if the treatment materials are harmful to human or the natural environment.

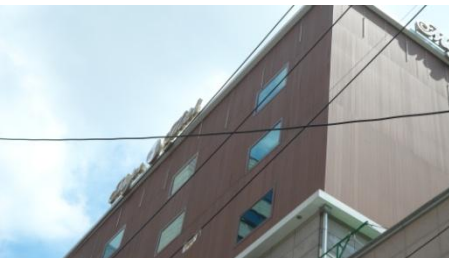
That's why the traditional CCA preservative treatment has been prohibited in advanced countries such as U.S.A. and Japan etc. as well as Korea.



The use of YES WOOD™ having wooden beauty and refined appearance will be rapidly increased due to its constructability, excellent material property, economics, eco-friendly characteristic.



YES WOOD™ is the product to solve the wooden problems such as crack, flexion, mold, decay etc. maintaining its texture. It is also used for bathroom, veranda and general interior material that are directly exposed to moisture as well as external finish material and deck material due to its hardness and water resistance.



It can be used for the sectors that utilize the strong point of eco-friendly WPC such as landscape, construction (deck, balustrade, wall, structure, others), offshore, waterfront, sound resistance wall, interior etc..

Stability

Extruding product with excellent Heat resistance, tensile strength, screw staying power, flexural strength etc.

Eco-friendly characteristic

Wooden flour, thermoplastics are not harmful to human, natural environment and it is an eco-friendly product that recycling, reprocessing is possible!

Economics

Simple construction by standardization comparing with timber that is easy to be deformed, decayed and has high production defect. Semi-permanent economics! Simple management without additional painting

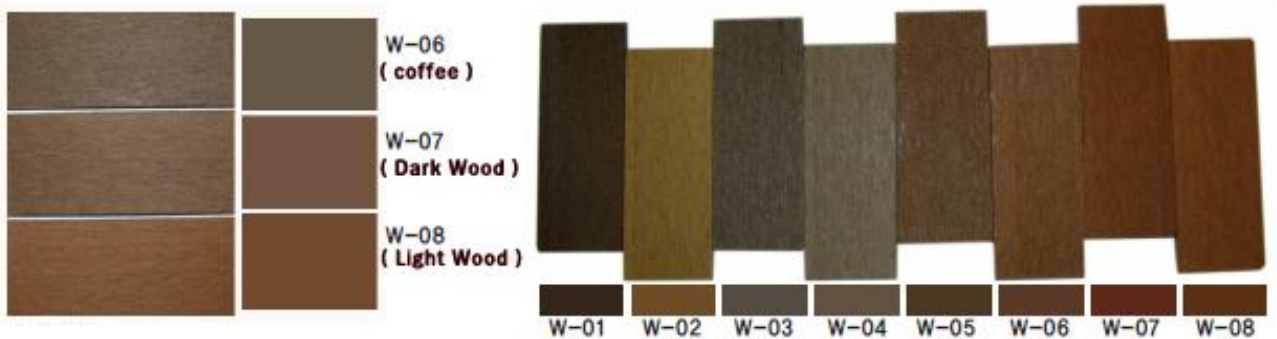
YES WOOD™ is not just a synthetic product but
an eco-friendly extruding product by long experience and high technology.



Mixing raw materials → extruding → cooling → cutting → surface processing → packing

Color & Construct

It expressed modern feeling through sanding and roller embossing type surface treatment as an extruding product consisting of 60% of wooden flour, 30% of HDPE, 10% of additives.



Basic colors

Customized colors

Property

It is a verified product by customers satisfying the exacting material property of eco-friendly WPC, receiving consistent orders.

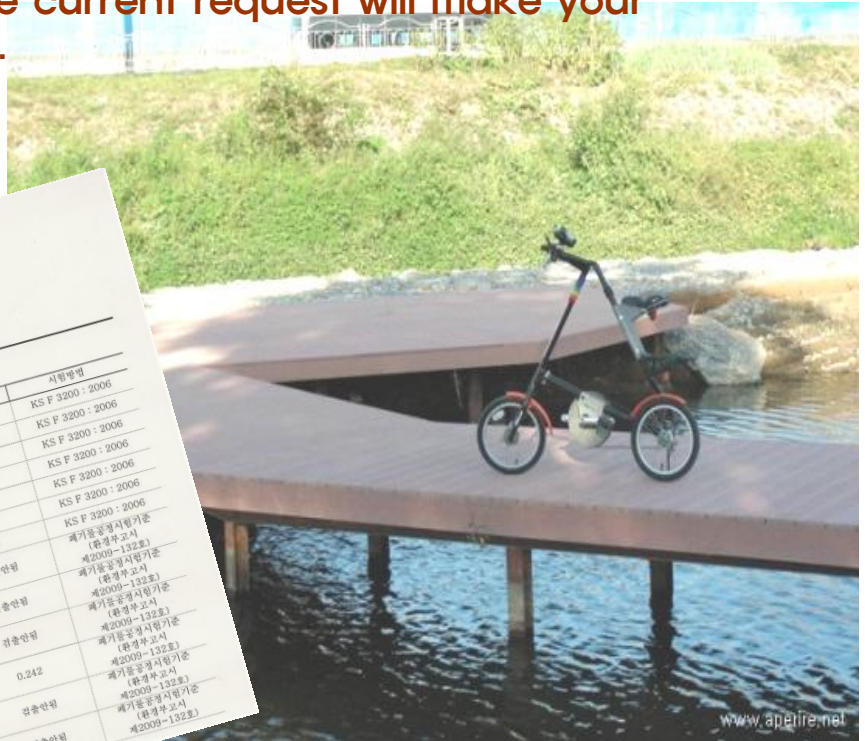
The validity of WPC and the stable material property of YES WOOD by the current request will make your facilities valuable.

the way to trust **KCL**

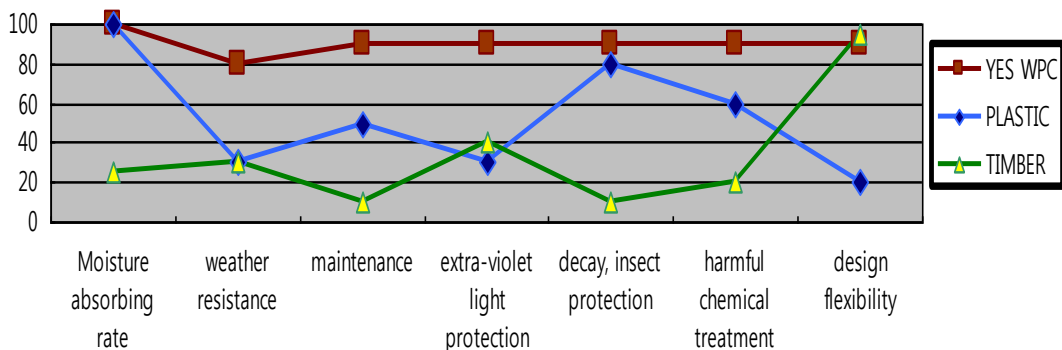
검수번호: ICRA15006
검수일자: 2010년 10월 15일
시 료 명: 친환경 합성목재

시험성적서
TEST REPORT


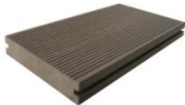


















시험항목	시험결과		결과	시험방법
	단위	구분		
황산도			30.4	KS F 3200 : 2006
습수부피팽창률	N/m ³	1	26.3	KS F 3200 : 2006
나사못유지력-평면방향	N/m ²	1	0.2	KS F 3200 : 2006
나사못유지력-측면방향		1	1344	KS F 3200 : 2006
포문알레르겐발산량-평면	mg/L	1	1278	KS F 3200 : 2006
포문알레르겐발산량-측면	mg/L	1	0.1	KS F 3200 : 2006
Pb	mg/L	1	0.2	폐기물공정시험기준 제2009-132호 (환경부고시 제2009-132호)
Cd	mg/L	1	검출안됨	폐기물공정시험기준 제2009-132호 (환경부고시 제2009-132호)
Cr ⁶⁺	mg/L	1	검출안됨	폐기물공정시험기준 제2009-132호 (환경부고시 제2009-132호)
Cu	mg/L	1	검출안됨	폐기물공정시험기준 제2009-132호 (환경부고시 제2009-132호)
Hg	mg/L	1	검출안됨	폐기물공정시험기준 제2009-132호 (환경부고시 제2009-132호)
As	mg/L	1	검출안됨	폐기물공정시험기준 제2009-132호 (환경부고시 제2009-132호)



Material property comparison of WPC, timber and plastic



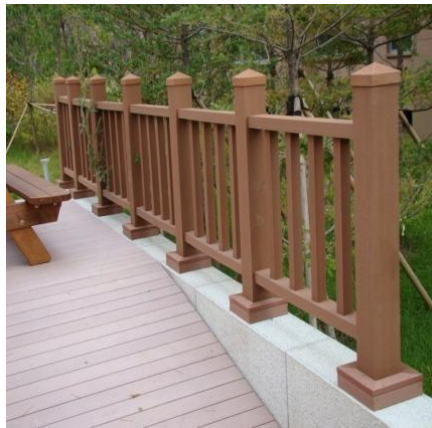
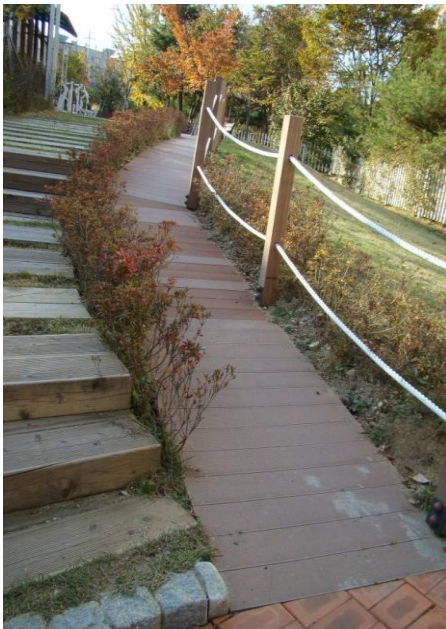
Product line

<p>YD-14630S 145 X 30mm</p> 	<p>YD-14025S 140 X 25mm</p> 	<p>YD-13018S 130 X 18mm</p> 	<p>YD-14635H 145 X 35mm</p> 	<p>YD-14630H 145 X 30mm</p> 
<p>YW-13010 130 X 10mm</p> 	<p>YW-15020 168 X 20mm</p> 	<p>YW-24020 250 X 20mm</p> 	<p>YD-14625H 146 X 25mm</p> 	<p>YD-14018H 140 X 18mm</p> 
<p>YF-12020 120 X 120mm</p> 	<p>YF-12020 Cap & Sleeve 130 X 130 X 650/203 X 203 X 450mm</p> 	<p>YF-09045 90 X 45mm</p> 	<p>YF-05050 50 X 50mm</p> 	<p>YF-07040 70 X 40mm</p> 
<p>YF-10010 100 X 100mm</p> 	<p>YF-10010 Cap 133 X 133 X 57mm</p> 	<p>YF-15820 158 X 20mm</p> 	<p>YF-03012 30 X 12mm</p> 	<p>YE-05020 50 X 20mm</p> 
<p>YE-08010 80 X 10mm</p> 	<p>YE-04040 40 X 40mm</p> 	<p>YE-14038 140 X 38mm</p> 	<p>YE-30020 300 X 20mm</p> 	<p>YE-04004 40 X 4mm</p> 

Deck material

Our deck materials have various sizes and construction methods and are recognized as the best quality materials. It automatically gives 5mm of drainage interval depending on the deck and we have T-clip use type that the pieces are not visible on the surface and Piece use type that is fixed by pieces from the upper plate.

Choose proper profile by use, hardness.



Balustrade material

Our balustrade materials having high quality surface with feeling of material wood and modern design are well harmonized with surrounding scenery so that it improves the value of the space.

YES WOOD™ 's fencing system



YES WOOD™ fencing materials systemized for simple installation

YES WOOD™'s Siding Board & Louver



YES WPC Co., Ltd. Promises the best effort for the application of valuable, efficient synthetic wood and wants to be memorized not as just a one-deal company but as your future-oriented partner.



There are materials to be increasingly used as the social environment is developed considering the cases of advanced countries. Everyone assumes the products that are useful for health are those materials.

Due to the problems of logging of natural wooden resource, harmfulness of preservative treatment timber and wood waste handling, we are facing the time to require nature-friendly, eco-friendly alternative materials.

While the existing external wooden facilities not only destroy the eco-system by heavy metals from chemical preservative material to prevent corrosion, decay but also vitally harm human, the wood plastic composite is harmless to human, a recyclable eco-friendly product complementing the weak points of the existing timber and a semi-permanent material that has excellent durability without deformation, discoloration.



YES WOOD™ has a strict policy for the precise construction.

Even if it is well produced, it must be defective, if not for a proper construction.

We would like to take care of and pay attention to the construction with our product that we sold in the position of consumer who pursues the economics when doing construction with more expensive material than natural timber.



YES WOOD™'s experience comes from site

The strong points of WPC will be 100% realized by the knowhow gained by the sweat of site workers and evaluating the developed products by the construction ourselves.

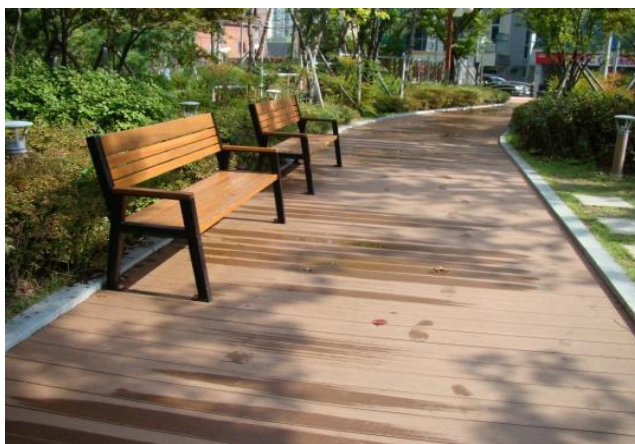


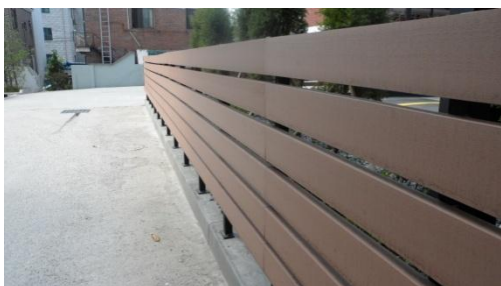
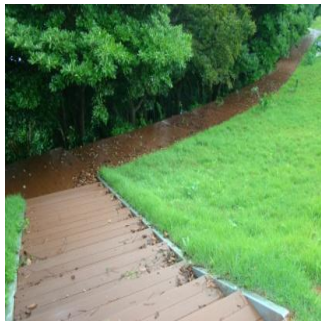


Yes

WOOD PLASTIC COMPOSITE

www.yeswpc.com





Factory & Distribution Center :
72-7, Samsungri, Namcheon-myub, Gyung-san ,
Gyungbook-do, Korea

Daechang industry building, 25-4, Palyong-dong,
Changwon, Gyeongsangnam-do, Korea

LG Twintel 1-1906, 157-8 Samsungdong,
Gangnamgu,
Seoul, Korea

Mail ; yeswpc@yeswpc.com

T.055-299-0252 / 02-508-2276

053-746-0255 / Fax.02-552-7856

www.yeswpc.com